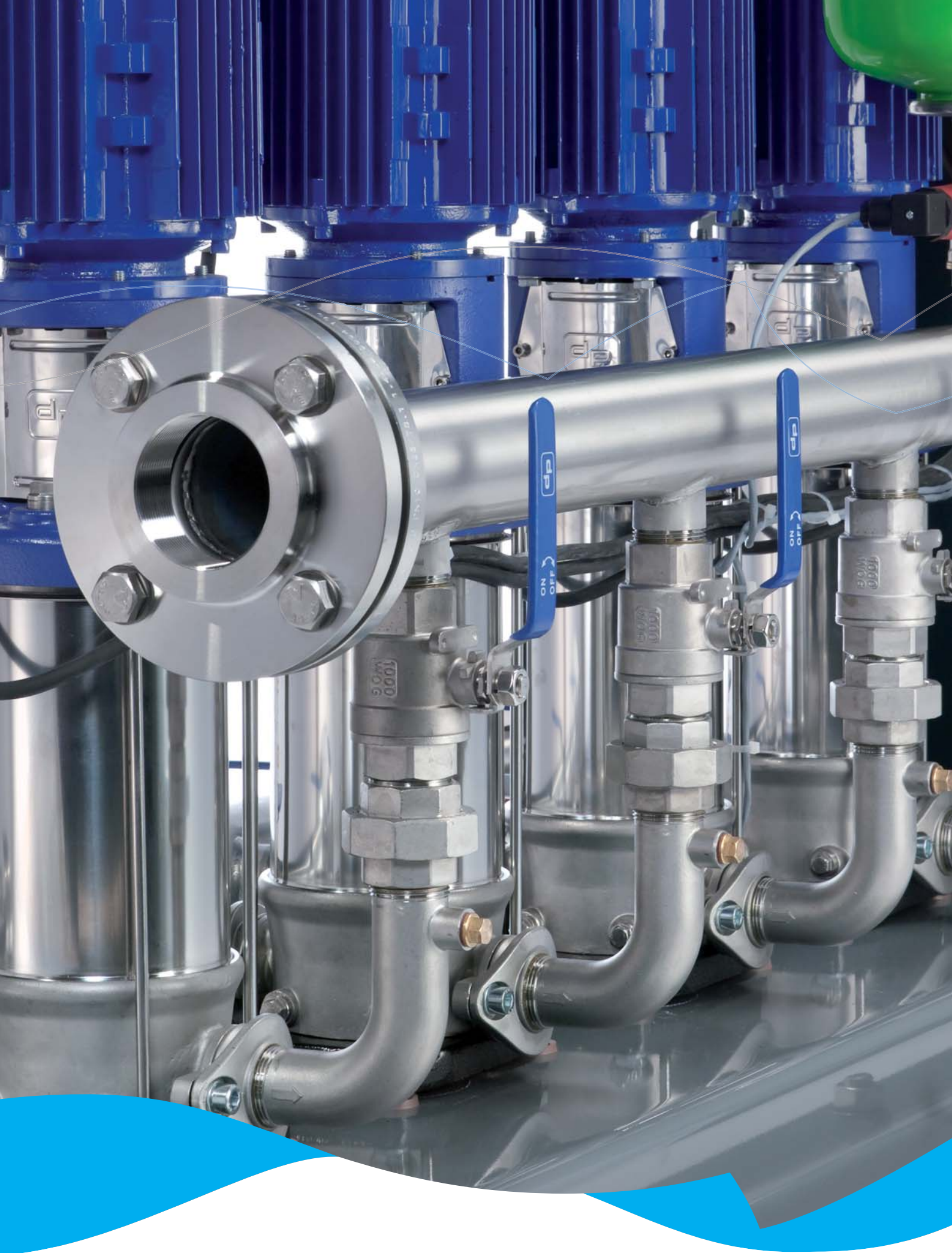


the **dynamics** of water



**utility line
booster systems**



hydro-unit®

utility line

DP-Pumps offers high quality solutions for every booster application. From experience, we know that buildings in the industry and utility sector often require booster systems with different options; custom-made solutions which usually imply longer delivery times and high costs. As the Dutch market leader in booster systems, we introduce, in addition to our Comfort Line, a new ,high quality, broadly applicable range of Hydro- Units: the Utility Line.

Experience

At DP- Pumps we design, produce and engineer innovative products for water transport. We can draw on over 50 years of experience in the pumping industry. The Utility Line is one of our latest developments combining maximum efficiency and durability.

Durable stainless steel basis

Irrespective of the specifications of the water in the system, durability comes first. The application of stainless steel pumps, fittings and headers makes this product line extremely durable. The systems are entirely designed according to the latest standards of the European Acceptance Scheme and the European CE marking system.

The possibilities are endless

The booster systems are available in a wide range of capacities and configurations.





intelligent and durable

Practical design

- Compact assembly
- Maximum width 80 cm
(with disassembled headers)
- Easy access
- Pumps can easily be exchanged

Durable stainless steel basis

- Vertical pumps DPV AISI 304
- Headers, valves and fittings AISI 304
- Optionally available in AISI 316

Intelligent accessories

- Non-return valves are integrated in the discharge bend
- Minimal line loss as a result of the application of ball valves or butterfly valves with a full bore

Flexible control panel set-up

- Solid universal control panel on a base plate
- Integrated into the booster system or wall mounted

Base plate

- Solid, powder coated steel frame / base plate
- Low noise and anti-vibration construction
- Mounted on adjustable machine feet

Energy efficient

- Constructed with new energy efficient DPV pump
- Advanced pump control using Megacontrol

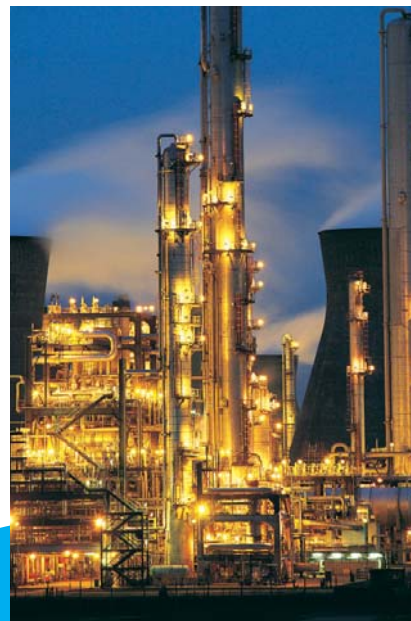


applications

The strength of our products lies in the use of high quality stainless steel. The application of this high quality material results in a high level of operational safety and the preservation of drinking and process water quality in the booster system. A solid basis for a broad range of applications.

The Utility Line is applicable in:

- High rise buildings
- Residential buildings
- Commercial buildings
- Industry
- Hospitals
- Hotels



compact assembly

Pumps in boosters systems are under constant high pressure. High quality connections to the headers are therefore important for durability.

The integration of the non-return valve into the discharge bend reduces the number of connections; a high quality change in design when compared to the conventional systems. Another smart feature is the improved connection of the pump to the headers, which results in a high quality and compact system for both high and low pressures.

Options: customize your installation

If what you need differs from the standard, we will gladly design a customized system. Optionally, we can provide your system with many extra technical features, such as:

- Different pump types
- AISI 316 components
- Testing certificates for several drinking water quality standards for the pumps



EAS



system control a

A control unit must be straightforward and equipped with the most advanced settings. Of particular importance to management and efficiency is the flexibility to easily adjust or re-adjust the system if the situation changes. DP-Pumps developed the Megacontrol as a standard pump control unit; an optimal combination of all of these aspects.

Versatile control

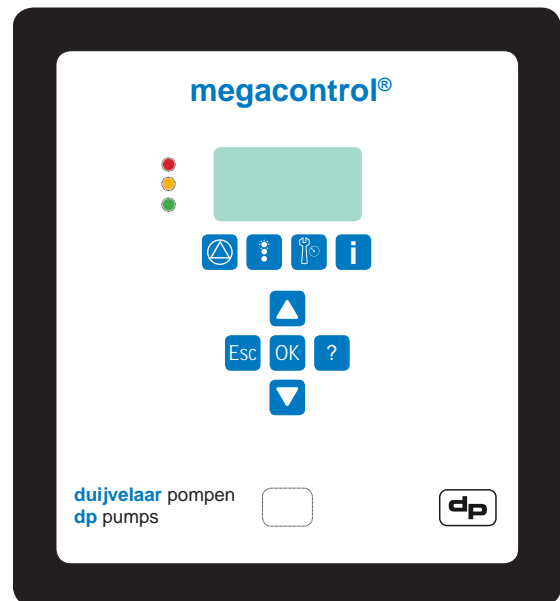
- Energy savings through intelligent control
- Pump control via Switch-on Direct On Line, Softstarter, stardelta switch or frequency converter

Simple

- LEDs to indicate the status of the system
- Multifunctional function and operating keys
- Set-up via Man Machine Interface, PDA or laptop
- Technical pump and system data available via back-light display

Practical

- Operation hours distribution and minimal operation hours optimization
- Low-pressure protection via digital contact or pressure-gauge
- Level control of of break tanks
- Alarm and failure reporting via change-over-contacts



nd management

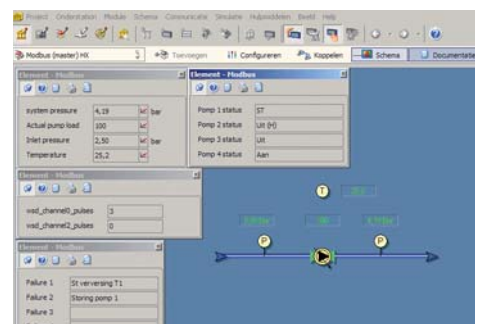
Utility Line booster systems have advanced communication options for management and control. The information from the Megacontrol can be converted into the following communication protocols:

- Modbus
- PROFIBUS

The installation with Megacontrol can easily be added to for example the existing Building Management System

The following parameters can be retrieved:

- System pressure
- Pump status
- Actual pump pressure
- Inlet pressure
- Ambient temperature
- Actual faults
- Failure history



working

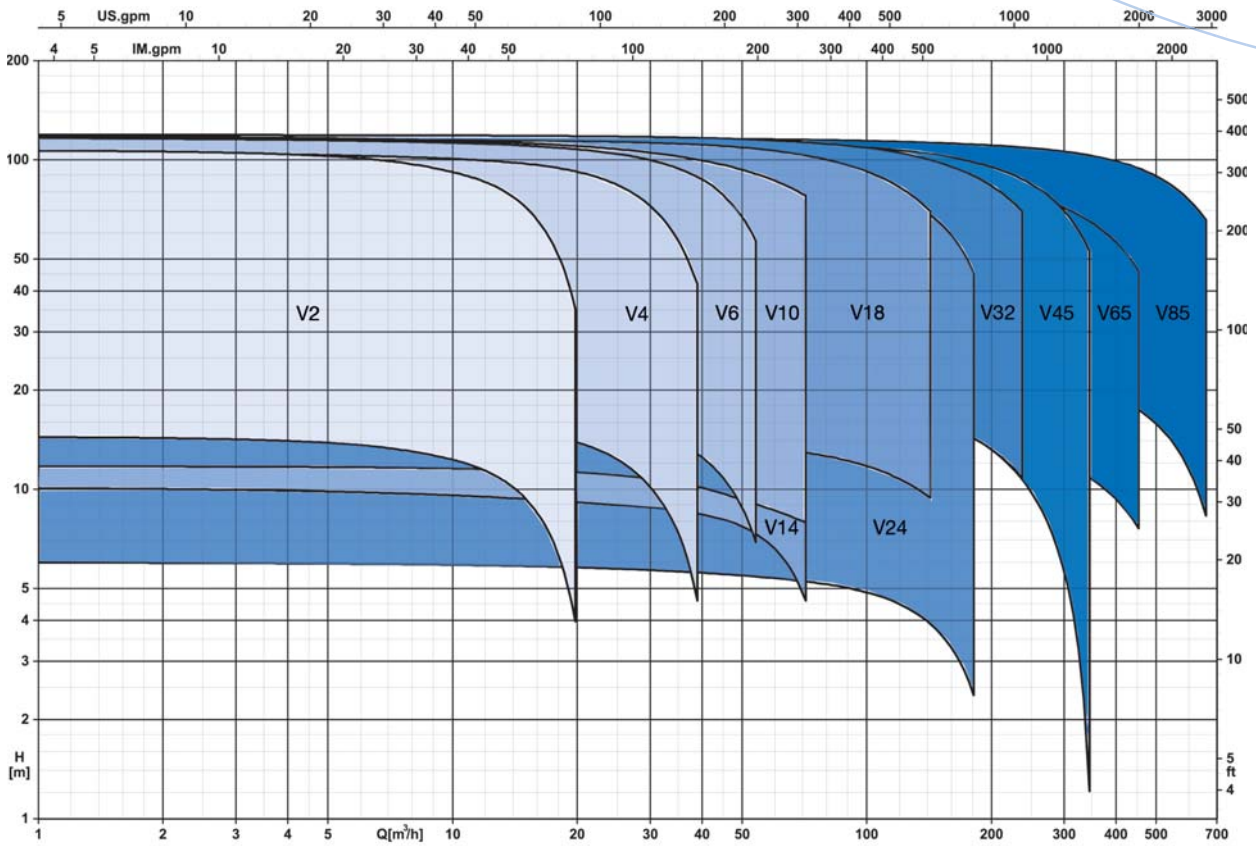
Number of pumps	2 - 6
Max. head [m]	120
Max. working pressure [PN]	16
Max flow ex. spare pump [m ³ /h]	660
Connection	G6/4" up to NW250
Medium	clean/aggressive
Temperature range medium [°C]	-15 up to 60

Pump models

The basis for the Utility Line booster systems is our line of high quality vertical DPV pump series. The installations come as standard with fitting size G2". Starting from NW 65 the booster systems are flanged.



range



1	2	3	4	5	10	20	30	40	50	100	200	300	400	500	700	HU6
0,8	1,7	2,5	3,3	4,2	8,3	16,7	25,0	33,3	41,7	83,3	166,7	250,0	333,3	416,7	583,3	HU5
0,7	1,3	2,0	2,7	3,3	6,7	13,3	20,0	26,7	33,3	66,7	133,3	200,0	266,7	333,3	466,7	HU4
0,5	1,0	1,5	2,0	2,5	5,0	10,0	15,00	20,0	25,0	50,0	100,0	150,0	200,0	250,0	350,0	HU3
0,3	0,7	1,0	1,3	1,7	3,3	6,7	10,00	13,3	16,7	33,3	66,7	100,0	133,3	166,7	233,3	HU2
Q [m³/h]																



dp pumps

dp pumps
P.O. Box 28
2400 AA Alphen aan den Rijn
Holland

t +31 172 48 83 25
f +31 172 46 89 30

dp@dp-pumps.com
www.dp-pumps.com

